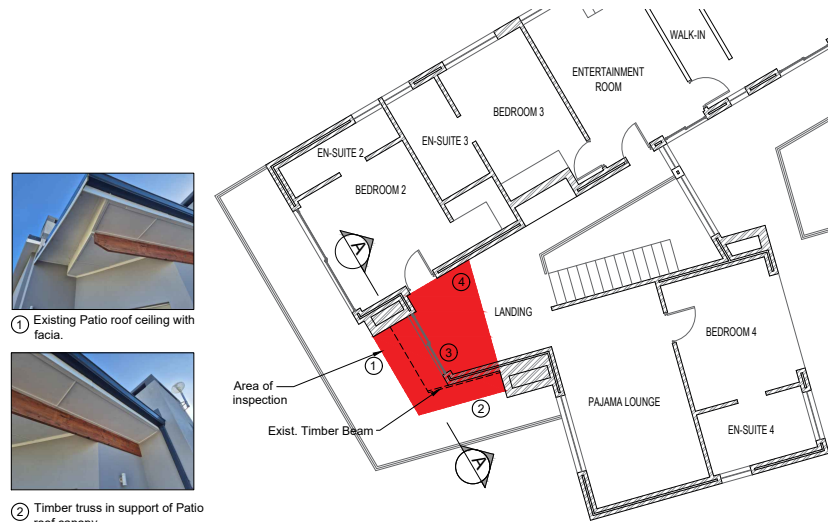
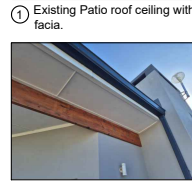


PROJECT SCOPE and INVESTIGATIVE NOTES



FIRST FLOOR PLAN
Location of defects
Scale 1 : 100



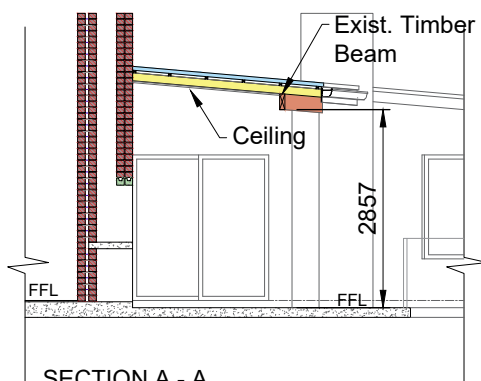
1 Existing Patio roof ceiling with fascia.
2 Timber truss in support of Patio roof canopy.



3 Metal roof sheeting sloping to one side.



4 Damaged roof flashing and ceiling boards strips.



SECTION A - A
Existing Patio truss detail

CONCEPT PROPOSAL : REMEDIAL CONCEPTS

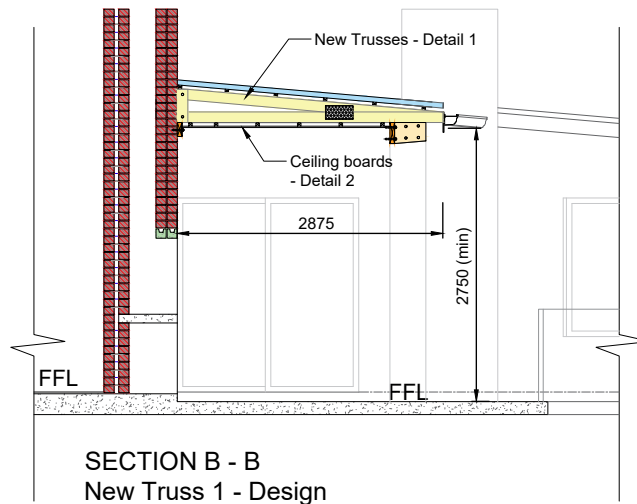
RE- CONSTRUCT : ROOF



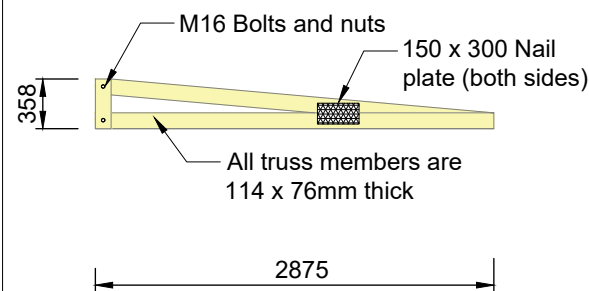
FIRST FLOOR PLAN
Truss Layout



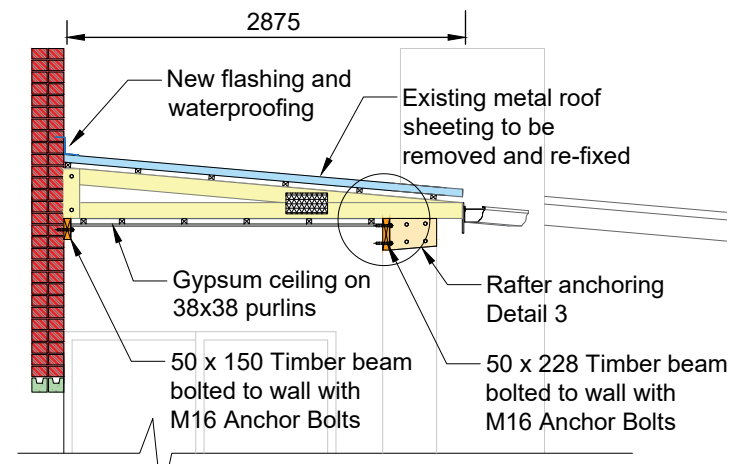
Existing configuration of Patio Roof supported by Timber beam



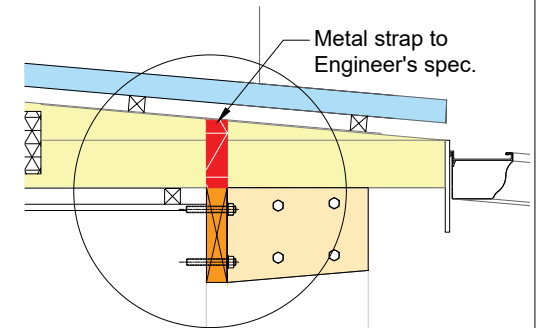
SECTION B - B
New Truss 1 - Design



DETAIL 1: TYPICAL TRUSS DETAIL - TRUSS 1
New Truss Design



DETAIL 2: NEW PATIO TRUSSES
Support beams and ceiling detail



DETAIL 3: TRUSS ANCHOR
Metal strap anchor to truss

NOTES:

No dimensions are to be scaled of any drawings. All dimensions are ratified onsite with the Engineer prior to any onstruction.

Issued for:

- Information

No.	Date	Revision Detail



Client: NATIONAL HOME BUILDERS
Project Description:
Structural Engineering services for
ERF 3126 - Bloukrans Street, Hartenbos:
House Venter

Drawing Description:

Repair to First Floor balcony roof

DESIGN	DRAWN	CHECKED	SCALE
MJB	SOD	MJB	As shown
DATE	October 2025		Drawing Size: A3

HEAD OFFICE:
OFFICE CORNER - Block C
184 Lancaster Road
Gordon's Bay, 7140
Tel: (066) 105 1226
e-mail: techq.development@outlook.com

DRAWING NO. HVenter-Struct-01/00
Rev.

