







**APPOINTMENT OF A COMPETENT SERVICE PROVIDER
TO SUPPLY AND INSTALL EXTERNAL BRANDING AT THE NATIONAL HOME
BUILDERS REGISTRATION COUNCIL (NHBRC) ERIC MOLOBI CENTRE IN
SOSHANGUVE.**

SPECIFICATION

ITEM	DESCRIPTION	QTY	AMOUNT
1. CURVED FRAME MOUNTED ON THE WALL	 <p>Size: 2000MM BY 800MM -Illuminated 4mm opal Perspex double sided. -Modern curved shape -Size 800mm x 2000mm -End Plates Powder coated in black – 4mm thick -Aluminium anodised finish</p>	1	

<p>2. PVC BACK LIT, WITH LED LIGHTS</p>	 <p>-PVC, -Back lit, -With LED lights -Rope to climb or 28m sky jack -4 to make a cube -Face size: 4000mm x 4000mm per side</p>	<p>1</p>	
<p>3. CURVED FRAME MOUNTED ON THE WALL</p>	 <p>-Curved frame mounted on the wall</p>	<p>1</p>	

	<ul style="list-style-type: none"> -Illuminated 4mm opal Perspex double sided. -Modern curved shape -End Plates Powder coated in black – 4mm thick -Aluminium anodised finish -Size: 2000mm by 2000mm 		
4. CURVED FRAME MOUNTED ON THE PALISADE FENCE	 <ul style="list-style-type: none"> -Mounted on Palisade -End Plates Powder coated in black – 4mm thick -Size: 2000mm by 2000mm -Modern curved shape -Aluminium anodised finish 	1	

**5. CURVED FRAME
MOUNTED ON THE
WALL**



- Modern curved shape
- Size: 2000mm x 2000mm
- Aluminium anodised finish
- End Plates Powder coated in black – 4mm thick



1

6. CURVED FRAME
MOUNTED ON THE
PALISADE GATE



1

- Modern curved shape
- Size: 2000mm x 2000mm
- Aluminium anodised finish
- End Plates Powder coated in black – 4mm thick

<p>7. CURVED FRAME MOUNTED ON THE WALL</p>	 <ul style="list-style-type: none"> -Modern curved shape -Size: 2000mm x 2000mm -Aluminium anodised finish -End Plates Powder coated in black – 4mm thick 	1	
<p>8. CURVED FRAME MOUNTED ON THE WALL</p>	 <ul style="list-style-type: none"> - Modern curved shape -Size: 3000mm x 3000mm -Aluminium anodised finish -End Plates Powder coated in black – 4mm thick 	1	

9. DOUBLE SIDED FLAG



- Double sided
- Mounted on poles
- Size: 400mm by 700mm

1

10. CURVED PARKING SIGN

1



- Modern curved shape
- Size: 400mm x 200mm
- Aluminium anodised finish
- End Plates Powder coated in black – 2mm thick

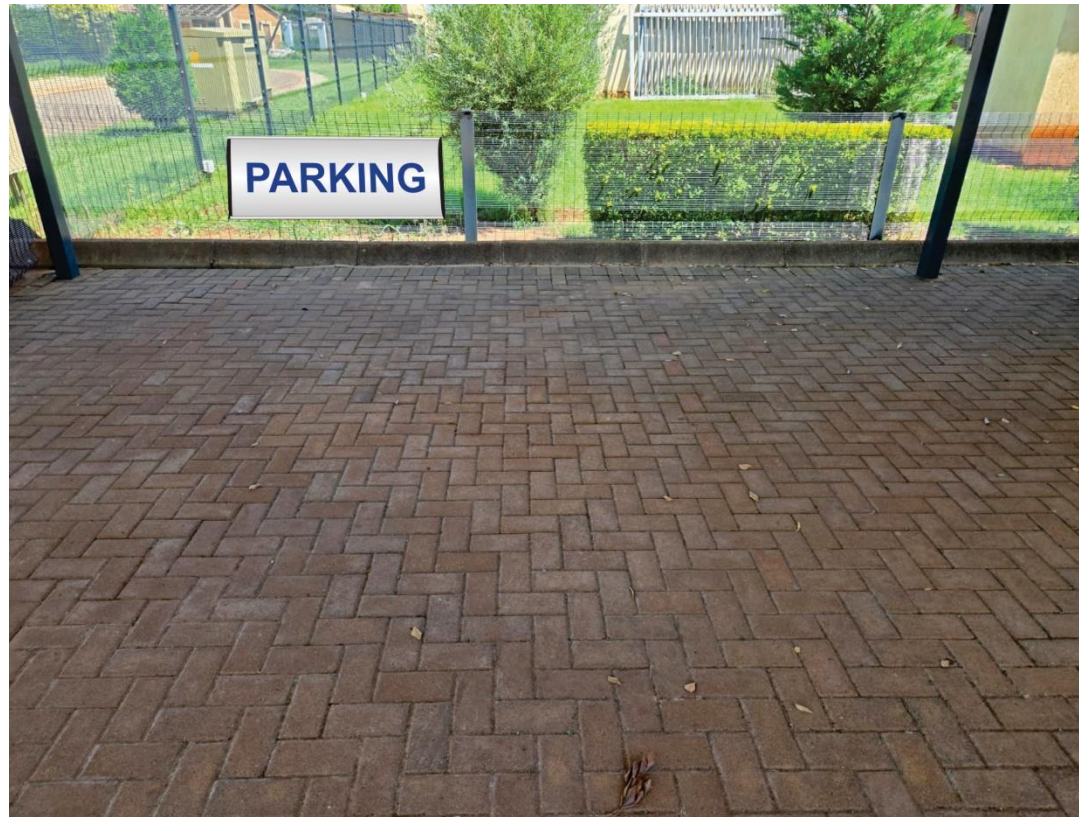
11. PYLON



- Modern curved shape
- Size: 800mm x 1800mm
- Aluminium anodised finish
- Vinyl should reflect
- Vinyl to have 7-10 years lifespan
- Solid vinyl cutout as per BMA colours
- Base Plate Powder coated in black – 8mm thick
- Top plate Powder coated in black - 4mm thick
- Middle Plate Powder coated in black – 4mm thick

1

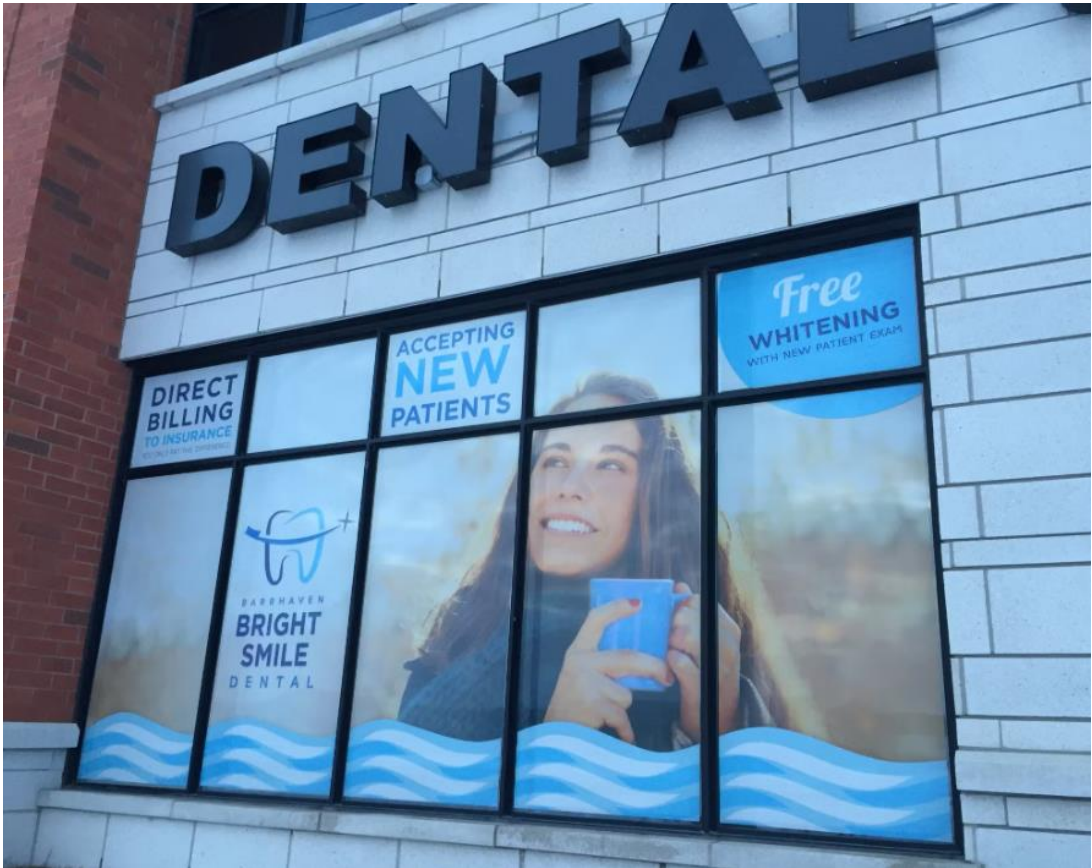
12. CURVED PARKING SIGN



- Modern curved shape
- Size: 400mm x 200mm
- Double sided
- Aluminium anodised finish
- End Plate Mild steel Powder coated in black – 2mm thick

1

13. WINDOW TINTING



1

Boardroom South – H -5280
W -6890
Boardroom West – H- 5280
W- 4630